

LOREM IPSUM
DOLOR SIT AMET.

AVENIR BOLD
WITH RULES ON COLOR

Lorem ipsum
dolor sit amet.

AVENIR BOLD PRIMARY HEADLINE FONT



SEAL



Aequae vestibulum, etu siam
consequat nunc se, luctus ex.
Aenean nisl justo, ie tincidunt
in dictum sed un sapien eros
convallis position magna.

FLEUR DE LIS WITH RULE FOR
MARKING CAPTIONS

Aequae vestibulum, consequat
nunc se, luctus ex. Aenean nisl
justo, tincidunt in dictum non,
consequat at mass sodale
eros sed sapien convallis pos.

CALL OUT BOX

AVENIR INTRO, SUB HEADS AND BODY TEXT

Consequat nunc sed, luctus ex.

Aenean nisl justo, tincidunt in dictum non,
consequat at massa. Sed sodales eros sed
sapien convallis posuere. Nisl justo, tincidunt
in dictum non, consequat

THICK COLORED AND TINTED RULES AS
DESIRED FOR DIVISION OF SPACE

THIN BLACK RULES AS DESIRED
FOR DIVISION OF SPACE

PUBLICO HEADLINE BOLD SECONDARY HEADLINE FONT

Lorem ipsum
dolor sit amet.

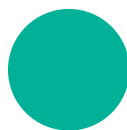
COLOR PALLET



PANTONE 301
CMYK 100 | 50 | 0 | 23
RGB 0 | 75 | 135
HEX #004B87



PANTONE 1225
CMYK 0 | 19 | 79 | 0
RGB 255 | 200 | 69
HEX #FFC845



PANTONE 3268
CMYK 86 | 0 | 53 | 0
RGB 0 | 171 | 142
HEX #00AB8E



PANTONE 637
CMYK 62 | 0 | 8 | 0
RGB 78 | 195 | 224
HEX #4EC3E0



PANTONE 172
CMYK 0 | 73 | 87 | 0
RGB 250 | 70 | 22
HEX #FA4616



PANTONE 7543
CMYK 24 | 9 | 8 | 22
RGB 152 | 164 | 174
HEX #498A4AE



PANTONE 430
CMYK 33 | 18 | 13 | 40
RGB 124 | 135 | 142
HEX #7C878E

DEPARTMENT OF PSYCHOLOGY

MAGNA EGET EST LOREM IPSUM DOLOR SIT AMET.

**Gain insight**

The Assumption psychology program gives you the opportunity to explore these questions and more.

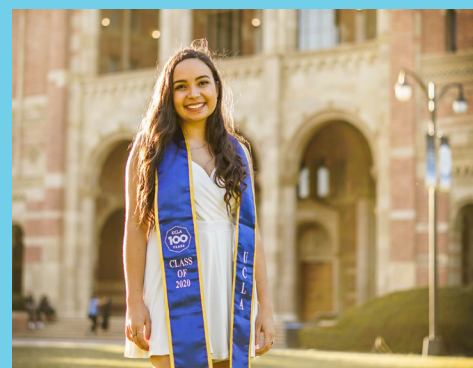
In the classroom and the research laboratory, you are introduced to the broad spectrum of psychology and its practical applications. In addition, Assumption provides you with a strong liberal arts foundation that allows you to apply your psychology degree to a range of rewarding careers or move on to graduate school.

Mindful exploration

Studying psychology at Assumption prepares you for a wide variety of career paths - from foundation courses that address general concepts and theoretical perspectives to electives that allow you to

personalize your education and delve more deeply into specific areas of interest. The psychology program teaches students to become better analysts, communicators, and problem solvers in order to develop skills that are necessary in the work force and in life.

Here, you have the opportunity to perform cutting-edge research alongside professors in our state-of-the-art facilities for mental health, developmental, learning and memory, and neuroscience research. They specialize in a variety of areas, providing students with an array of study options. Avid educators and mentors, our faculty members foster a culture of collaboration among fellow professors and students alike.

**#AUachievers**

"I credit the success I had at my internship to Assumption. Not only are the professors extraordinary, but the knowledge I gained surpassed my expectations."

Because of the small classroom setting and faculty-to-student ratio, students truly get to know their professors and develop relationships that lead to opportunities for mentorship, research, collaboration, and experiences that aren't possible at other schools. Assumption has thoroughly prepared me for my graduate work."

Lindsay Gomes '18

Psychology, Research Assistant in the Psychology Department at Assumption College, Post-Grad Plans: Pursuing a Ph.D. in Developmental Psychology at the University of North Carolina at Chapel Hill

DID YOU KNOW?

Assumption and the University of Massachusetts Medical School, located only four miles from the College, have formed a research partnership through which Assumption psychology students have the opportunity to work alongside top researchers on cutting-edge projects, in both paid and unpaid internships.

Course of study

PSYCHOLOGY

Major or Minor. Assumption psychology majors are known for their strong communication skills, understanding of human behavior, problem-solving skills, and ability to collect, organize, analyze, and interpret data and information. You will take foundation courses that address general concepts and theoretical perspectives and electives that allow you to delve more deeply into a specific area of interest: child development, social psychology, abnormal psychology, interpersonal communication, motivation and emotion, and cognitive and brain science.

Major in Psychology with Concentration in the Neuroscience of Human Behavior.

This major is ideal for students who wish to focus on the psychological aspects of brain function. Students in this concentration are grounded in some foundations of biological and psychological science and then apply these tools to the specialized study of social, cognitive, and affective neuroscience. Students in this concentration will be prepared to work in research laboratories and to explore career avenues in applied neuroscience.



Minor in Applied Behavior Analysis. The minor in ABA is an interdisciplinary program that prepares students to work in a variety of settings, especially agencies that serve children and adults with autism and developmental disabilities. Students learn evidence-based procedures for teaching communication, social, vocational, and pre-academic skills to clients and have the option of completing an ABA-based internship.

DID YOU KNOW?

Assumption undergraduates perform research projects with faculty in advanced psychology laboratory facilities. The scope of these projects differ according to academic interest, such as emotional reactivity, autism, or co-parenting. Students have published some of these projects in academic journals and/or presented at academic conferences.

Learn by doing

In order to gain valuable career experience and increase the competitiveness of your applications to graduate programs, psychology majors are strongly encouraged to participate in an internship.

As part of your internship, you also complete a reflective journal, readings in the field, and a comprehensive research paper. Your Assumption professors will serve as both sponsors and mentors during the entire experience. Through your internship, not only will you acquire the knowledge, confidence, and professionalism that will give you a leg up in today's competitive job market, but you'll also make important contacts that may lead to employment.



SAMPLE INTERNSHIP SITES

Behavioral Concepts, Inc.
Central Massachusetts Collaborative
Eisenberg Assisted Living Residency
Elder Services of Worcester
Massachusetts Department of Social Services
University of Massachusetts Medical School
Worcester Juvenile Court
Worcester Public Schools

> WHAT'S NEXT?

Many of our graduates go on to complete their master's degree or doctorate in psychology, sociology, rehabilitative services, and law at leading institutions.

Psychology majors enter directly into careers in such fields as education, human resources, marketing, communications, and counseling.

Here's a sampling of where Assumption alumni are sharing their insights:

SAMPLE RECENT EMPLOYERS

AMICA Insurance
BayPath Elder Services
Disney
Fidelity Investments
Justice Resource Institute
May Institute
The New England Center for Children
Peace Corps
Saint Francis Care and Behavioral Health
Target
Walgreens

SAMPLE RECENT GRADUATE SCHOOLS

Assumption College
Boston College
Columbia University
Fairfield University
Loyola University
MCPHS
Northeastern University
Penn State
Ponce Health Sciences University
Smith College
Tufts University
UConn
University of Massachusetts - Boston
University of North Carolina at Chapel Hill
University of Virginia
William James College

Magna eget este lorem ipsum dolor sit amet.

Lorem ipsum dolor amet,
consectetur adipiscing elit,
sed do eiusmod tempor
incididunt ut labore mass
id. Nibh mauris.

Gain insight

The Assumption psychology program gives you the opportunity to explore these questions and more.

In the classroom and the research laboratory, you are introduced to the broad spectrum of psychology and its practical applications. In addition, Assumption provides you with a strong liberal arts foundation that allows you to apply your psychology degree to a range of rewarding careers or move on to graduate school.

Mindful exploration

Studying psychology at Assumption prepares you for a wide variety of career paths - from foundation courses that address general concepts and theoretical perspectives to electives that allow you to personalize your education and delve more deeply into specific areas of interest. The psychology program teaches students to

become better analysts, communicators, and problem solvers in order to develop skills that are necessary in the work force and in life.

Here, you have the opportunity to perform cutting-edge research alongside professors in our state-of-the-art facilities for mental health, developmental, learning and memory, and neuroscience research. They specialize in a variety of areas, providing students with an array of study options. Avid educators and mentors, our faculty members foster a culture of collaboration among fellow professors and students alike. Students can also apply what is learned in class through hands-on experience completing an internship or engaging with the community in community service learning courses.



#AUachieves

"I credit the success I had at my internship to Assumption. Not only are the professors extraordinary, but the knowledge I gained surpassed my expectations."

Because of the small classroom setting and faculty-to-student ratio, students truly get to know their professors and develop relationships that lead to opportunities for mentorship, research, collaboration, and experiences that aren't possible at other schools. Assumption has thoroughly prepared me for my graduate work."

Lindsay Gomes '18

Psychology, Research Assistant in the Psychology Department at Assumption College, Post-Grad Plans: Pursuing a Ph.D. in Developmental Psychology at the University of North Carolina at Chapel Hill

Course of study

PSYCHOLOGY

Major or Minor. Assumption psychology majors are known for their strong communication skills, understanding of human behavior, problem-solving skills, and ability to collect, organize, analyze, and interpret data and information. You will take foundation courses that address general concepts and theoretical perspectives and electives that allow you to delve more deeply into a specific area of interest: child development, social psychology, abnormal psychology, interpersonal communication, motivation and emotion, and cognitive and brain science.

Major in Psychology with Concentration in the Neuroscience of Human Behavior.

This major is ideal for students who wish to focus on the psychological aspects of brain function. Students in this concentration are grounded in some foundations of biological and psychological science and then apply these tools to the specialized study of social, cognitive, and affective neuroscience. Students in this concentration will be prepared to work in research laboratories and to explore career avenues in applied neuroscience.

Minor in Applied Behavior Analysis. The minor in ABA is an interdisciplinary program that prepares students to work in a variety of settings, especially agencies that serve children and adults with autism and



developmental disabilities. Students learn evidence-based procedures for teaching communication, social, vocational, and pre-academic skills to clients and have the option of completing an ABA-based internship.

Learn by doing

In order to gain valuable career experience and increase the competitiveness of your applications to graduate programs, psychology majors are strongly encouraged to participate in an internship.

As part of your internship, you also complete a reflective journal, readings in the field, and a comprehensive research paper. Your Assumption professors will serve as both sponsors and mentors during the entire experience. Through your internship, not only will you acquire the knowledge, confidence, and professionalism that will give you a leg up in today's competitive job market, but you'll also make important contacts that may lead to employment.

DID YOU KNOW?

Assumption undergraduates perform research projects with faculty in advanced psychology laboratory facilities. The scope of these projects differ according to academic interest, such as emotional reactivity, autism, or co-parenting. Students have published some of these projects in academic journals and/or presented at academic conferences.

SAMPLE INTERNSHIP SITES

Behavioral Concepts, Inc.
Central Massachusetts Collaborative
Eisenberg Assisted Living Residency
Elder Services of Worcester
Massachusetts Department of Social Services
University of Massachusetts Medical School
Worcester Juvenile Court
Worcester Public Schools



#AUachievers

"I credit the success I had at my internship to Assumption. Not only are the professors extraordinary, but the knowledge I gained surpassed my expectations."

Lindsay Gomes '18

Psychology, Research Assistant in the Psychology Department at Assumption College

WHAT'S NEXT?

Many of our graduates go on to complete their master's degree or doctorate in psychology, sociology, rehabilitative services, and law at leading institutions.

Psychology majors enter directly into careers in such fields as education, human resources, marketing, communications, and counseling.

Here's a sampling of where Assumption alumni are sharing their insights:

SAMPLE RECENT EMPLOYERS

AMICA Insurance
BayPath Elder Services
Disney
Fidelity Investments
Justice Resource Institute
May Institute
The New England Center for Children
Peace Corps
Saint Francis Care and Behavioral Health
Target
Walgreens

SAMPLE RECENT GRADUATE SCHOOLS

Assumption College
Boston College
Columbia University
Fairfield University
Loyola University
MCPHS
Northeastern University
Penn State
Ponce Health Sciences University
Smith College
Tufts University
UConn
University of Massachusetts - Boston
University of North Carolina at Chapel Hill
University of Virginia
William James College